



GENUINE MEGA.

MET



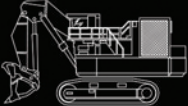




MET-MEGA EQUIPMENT TRAILER



TYPICAL EQUIPMENT WEIGHTS

MODEL

	MET-135		MET-185		MET-285		MET-485	
DOZER 	CAT®	D9R 54 T D10R 73 T D11R 115T	KOMATSU®	D575A-3SD-168T				
	KOMATSU®	D375A-3 75T D474A-3 114T D475AA-3SD 116T						
BLASTHOLE DRILL & CONTINUOUS MINER 	DRILLTECH®	D50KS-47T D55SP-61T D60KS-65T D75KS-65T	BUCYRUS®	M4B-145T	ATLAS COPCO®	PV351 Rotary-187T"Pit Viper"		
	ATLAS COPCO®	PV271-88T DMM -58T DM M3-115T	P&H®	GD100B-175T GD120-150T 100XP-143T 120A-183T	B-E®	59R-203T		
	P&H®	GD70-120T 250XP-125T	B-E®	49R-150T 49R II-170T 55R-143T 60R-150T 61R-152T				
	B-E®	39R-135T 40R-75T 45R-78T	EASI-MINER®	1224-168T				
	EASI-MINER®	475-74T						
HYDRAULIC SHOVEL 	HITACHI®	EX1200-122T	CAT®	5110B ME-138T	CAT®	513B-201T	CAT®	5230 B ME-349T 5230 FS-351T 5230B FS-351T
	TEREX®	RH40F-112T	TEREX®	RH75C-138T	HITACHI®	EX1800-199T EX1900-205T EX2500-267T	HITACHI®	EX3500-375T EX3600-386T
	KOMATSU®	PC1250-121T	LIEBHERR®	R984-136T	KOMATSU®	PC1800/6-203T PC3000-280T	KOMATSU®	H285S-369T PC4000-425T
			KOMATSU®	PC1400-154T H135S-151T	TEREX®	1550 SD-228T 1200B-208T	LIEBHERR®	RH994B-331T
					LIEBHERR®	RH90C-184T RH120C-246T R994-252T	P&H®	2250SD-346T
							TEREX®	RH120E-313T RH170-405T
ELECTRIC SHOVEL 					P&H®	1400E/DE-190T 1600-278T 1600CL/LR-288T	P&H®	1900AL CL-412T 1900AL-421T 1900AL CL/LR-450T 2100BL CL/MR-482T
					BUCYRUS®	15M-256T	BUCYRUS®	182M-356T
							B-W®	182M-364T 195B-426T
LOADER 	CAT®	990-85T 92G-104T	LETOURNEAU®	L1100-152T	CAT®	994-211T	LETOURNEAU®	L2350-289T
	KOMATSU®	WA800-110T WA900-118T			KOMATSU®	WA1200/3-230T		
	LETOURNEAU®	L1000-117T			LETOURNEAU®	L1350-203T L1400-225T L1800-243T L1850-256T		

The information on this page is based upon average machine weights. Individual machine weights may vary dependent upon options and models. Customer is responsible to confirm the weights of their individual machines prior to order. NOTE: WEIGHTS ARE GIVEN IN SHORT TONS.

MEGA CORP.

700 Osuna Rd N.E. • Albuquerque, NM 87113 • 1-800-345-8889 • 505-345-2661 • Fax 505-345-6190

www.megacorpinc.com

03-2015® Mega Corp., Inc. All Rights Reserved



The MET-Mega Equipment Trailer is custom designed to match your haulage equipment needs. Call a sales representative for more information at 1-800-345-8889 or go to our website for more information at www.megacorpinc.com.



OPTIONS

- Access ladders
- Walk platforms on side of trailer
- Complete hitch, deck and fender package available
- Side loading
- Hydraulic ramps
- Other options on request



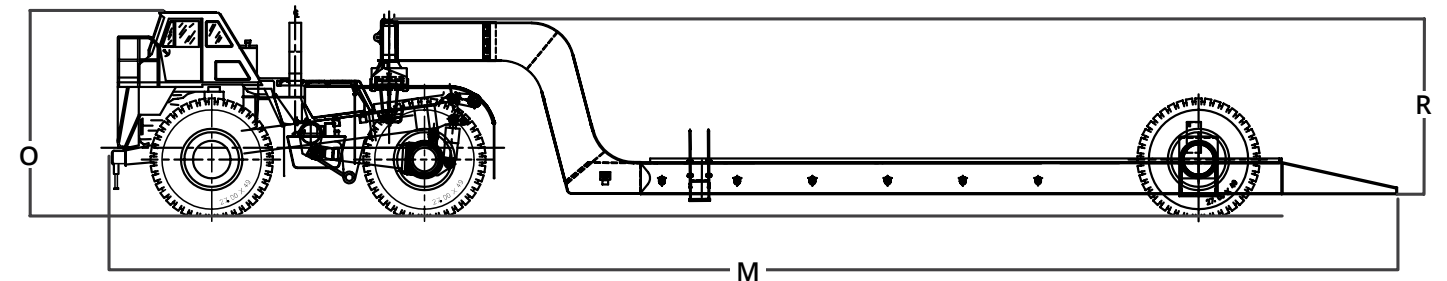
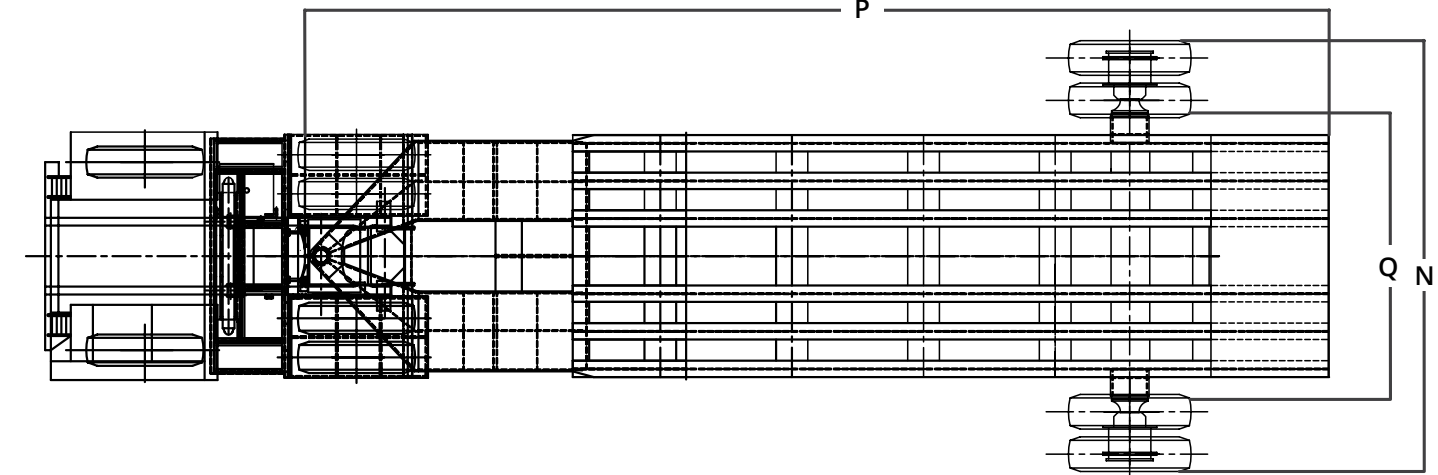
FEATURES

- Large cross-sectional area design of gooseneck provides low stress levels
- Allows easy maneuverability and excellent stability
- Ball hitch with turnstops
- Apitong wood decking
- Solid beam loading
- Single axle design
- Decking and fender
- Tie down rings
- Stationary ducktail

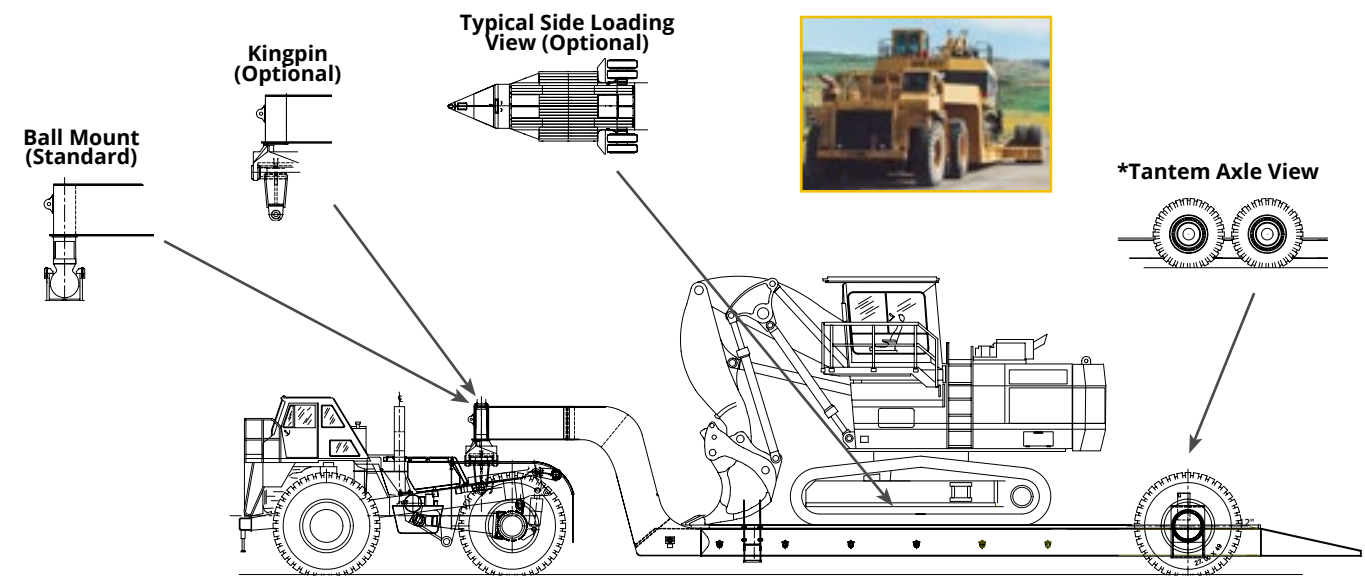
MODEL

SPECIFICATIONS	MET - 135	MET - 185	MET - 285	MET - 485
WEIGHT: LBS. (KG)				
Payload Weight	270,000 (122,472)	370,000 (167,832)	570,000 (258,552)	970,000 (439,992)
Trailer Weight	101,372 (45,982)	118,002 (53,526)	141,760 (64,302)	190,000 (86,184)
Trailer With Load	371,372 (168,454)	488,002 (221,358)	711,760 (322,384)	1,160,000 (526,176)
Tire Load Rating By Speed:				
Tire Size	27.00 R49	27.00 R49	37.00 R57	40.00 R57
5 mph (8.05 km/h)	99,000 (44,906)	99,000 (44,906)	182,000 (82,555)	220,500 (100,019)
10 mph (16.10 km/h)	86,130 (39,069)	86,130 (39,069)	158,340 (71,823)	191,835 (87,016)
15 mph (24.15 km/h)	79,200 (35,925)	79,200 (35,925)	145,000 (65,772)	187,425 (85,016)
DISTRIBUTION: LBS. (KG)				
Empty Machine Weight (EVW):				
A) Front	56,715 (25,726)	58,764 (26,655)	103,900 (47,129)	106,665 (48,383)
B) Rear	87,895 (39,869)	97,899 (44,407)	140,051 (63,527)	154,564 (70,110)
C) Trailer Rear	63,864 (28,969)	68,442 (31,045)	107,738 (48,870)	138,700 (62,914)
Gross Machine Weight (GMW):				
D) Front	73,950 (33,544)	85,213 (38,653)	125,593 (56,969)	146,857 (66,614)
E) Rear	172,047 (78,041)	227,039 (102,985)	252,881 (114,707)	365,575 (165,825)
F) Trailer Rear	232,478 (105,452)	282,853 (128,302)	543,215 (246,402)	*857,496 (388,960)
Tire load (@ GMW):				
G) Front	36,975 (16,772)	42,607 (19,327)	62,797 (28,485)	73,429 (33,307)
H) Rear	43,012 (19,510)	56,760 (25,746)	63,220 (28,677)	91,394 (41,456)
I) Trailer Rear	58,120 (26,363)	70,713 (32,075)	135,804 (61,601)	*214,374 (97,240)
% Of Weight Distribution (@ GMW):				
J) Front	15.50%	14.30%	13.60%	10.70%
K) Rear	36.00%	38.20%	27.40%	26.70%
L) Trailer Rear	48.50%	47.50%	59.00%	* 62.20%
OPERATIONAL DIMENSIONS FT.IN (M)				
M) Length	91'-2" (27.79)	91'-2" (27.79)	101'-6" (30.94)	104'-10" (31.95)
N) Width	30'-6" (9.30)	32'-10" (10.00)	40'-9" (12.42)	46'-9" (14.25)
O) Height	14'-7" (4.44)	14'-7" (4.44)	17'-1" (5.21)	17'-1" (5.21)
SHIPPING DIMENSIONS TRAILER FT.IN (M)				
P) Length	72'-7" (22.12)	72'-8" (22.15)	77'-0" (23.47)	81'-8" (24.89)
Q) Width	17'-2" (5.23)	20'-2" (6.15)	21'-8" (6.60)	26'-0" (7.92)
R) Height	12'-5" (3.78)	12'-5" (3.78)	13'-10" (4.22)	15'-8" (4.78)

Operational & Shipping Dimensions



Typical Tractor & Trailer Configuration



(ENW) Empty Machine Weight	A	B	C
(GMW) Gross Machine Weight	D	E	F
Each Tire Load @ GMW	G	H	I
% Of Weight Distribution @ GMW	J	K	L

The information on this page is based upon average machine weights. Individual machine weights may vary dependent upon options and models. Customer is responsible to confirm the weights of their individual machines prior to order. NOTE: WEIGHTS ARE GIVEN IN SHORT TONS.

* Data for Tandem Axle Design