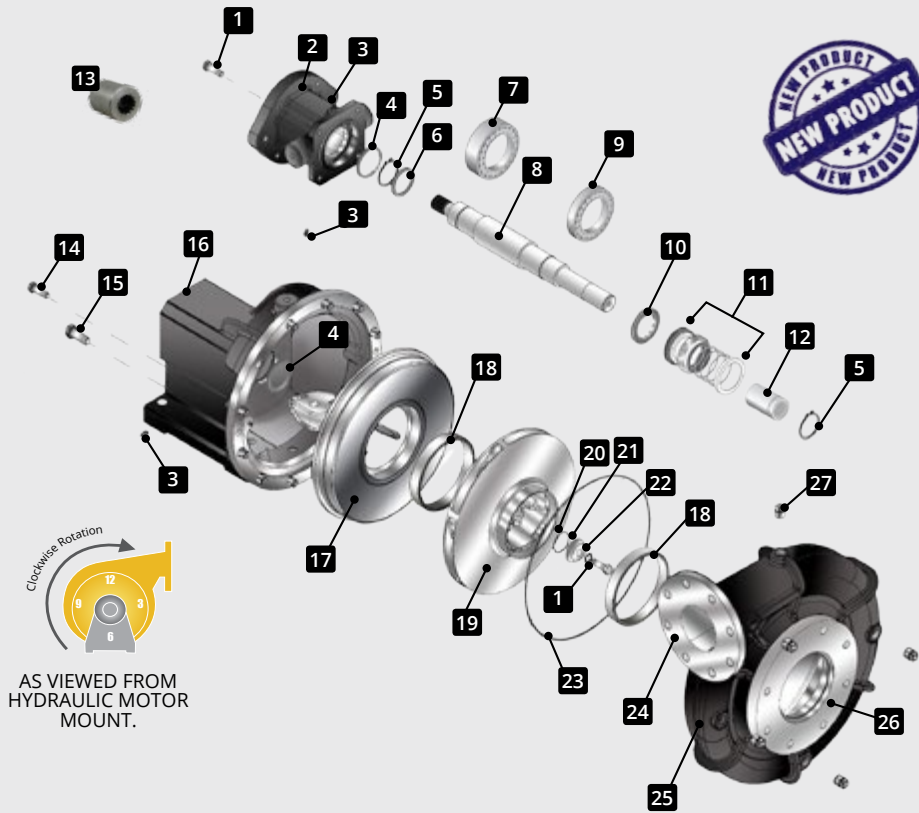


MEGA M-4B Water Pump, CW, Corrosion Resistant, Mechanical Seal

Part No. 306671

Mega cast iron frame (bracket) and stainless steel packing mount. Stress-proof carbon steel shaft.
 • Clockwise Rotation • 6 inch Inlet • 4 inch Discharge • Mechanical Packing Seal



CASING KIT-306665
 INCLUDES PARTS: 14,23,25



IMPELLER KIT-306664
 INCLUDES PARTS: 1,14, 18-23



SHAFT KIT-306663
 INCLUDES PARTS: 1,4-10,12,20-23



Clockwise Rotation
 AS VIEWED FROM
 HYDRAULIC MOTOR
 MOUNT.

ITEM	PART NO.	DESCRIPTION	QTY	ITEM	PART NO.	DESCRIPTION	QTY
	306671	M4-B, CW, Mechanical Seal		16	306716	Bracket, Frame Mount	2
1	306720	Capscrew, Hex HD ½-13NC X 1-1/2L 316SS*	4	17	306725	Seal Plate, Stainless Steel	1
2	306736	Bearing Cap Motor Bracket	1	18	306717	Wear Ring, Stainless Steel	2
3	306697	Grease Fitting, 5/16 inch	2	19	306727	Impeller	1
4	302302	Oil Seal, Impeller Side*	2	20	306729	O-Ring*	1
5	300536	Snap Ring, Retainer*	1	21	306719	Washer, Impeller, Stainless Steel*	1
6	300542	Thrust Ring*	1	22	306721	Washer, External Tooth, Stainless Steel*	1
7	302296	Bearing, Drive Side*	1	23	306698	O-Ring, Casing*	1
8	306718	Shaft, Splined, 20.15 inch*	1	24	012930	Gasket, Outlet Flange, 4 inch	1
9	302297	Bearing, Impeller Side*	1	25	306798	Volute Case With Wear Ring	1
10	300541	Water Slinger*	1	26	302527	Gasket, Inlet Flange, 6 inch	1
11	302299	Seal, Mechanical Shaft	1	27	306724	Plug, Pipe, Stainless Steel	5
12	306735	Sleeve, Shaft*	1	28	306665	Casing Kit	1
13	301927	Spline Coupling, 1 1/4 inch	1	29	306664	Impeller Kit	1
14	306722	Capscrew, Hex ¼-20X1-1/2	2	30	306663	Shaft Kit	1
15	306730	Capscrew, Hex HD 5/8 inch	12				

If illustration does not match your configuration please call product support at 505-345-2661 or 1-800-345-8889.

* These parts are included in the shaft kit. The shaft is not sold separately and is only sold as a shaft kit.

† Replacement part only. Part sold separately and not included with the water pump.